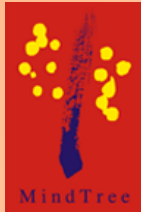


Platinum Sponsor

**Microsoft®**

Gold Sponsors



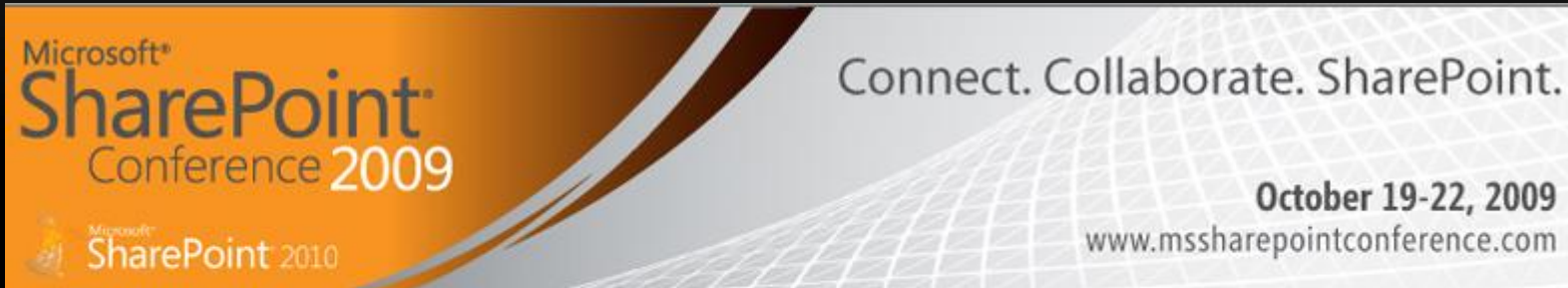
**Kodak**



# SOUTHEAST ASIA SHAREPOINT CONFERENCE

SINGAPORE 26 + 27 OCTOBER 2010

# LUCKY DRAW – DROP YOUR CARD HERE



Microsoft®  
**SharePoint®**  
Conference 2009

Connect. Collaborate. SharePoint.

October 19-22, 2009  
[www.mssharepointconference.com](http://www.mssharepointconference.com)

Microsoft®  
SharePoint 2010

## Microsoft SharePoint Session Content Access

Thank you for your interest in purchasing SharePoint Session Content Access through MySPC.

### SharePoint Conference 2009 Content Access: \$399 (USD)

By purchasing SPC Content Access you will be entitled to access to all of the SharePoint Conference 2009 content online through MySPC. This includes the PPT decks, recorded sessions and HOL manuals from the content that was presented at SharePoint Conference 2009. This information will be available online for access until October 2010.

Please select the "Continue" button below to purchase.

Continue



**SOUTHEAST ASIA**  
**SHAREPOINT CONFERENCE**  
SINGAPORE 26 + 27 OCTOBER 2010

Steve Sofian [MVP]

Solutions Architect, arvato systems

Founder, SharePointPROs.SG

# SHAREPOINT 2010 LISTS



**SOUTHEAST ASIA**  
**SHAREPOINT CONFERENCE**  
SINGAPORE 26 + 27 OCTOBER 2010

# ABOUT ME

- arvato systems (Bertelsmann Group)
  - Solution Architect / Business Unit Lead, APJ
- SharePointPROs.SG
  - Founder
- MVP SharePoint Server since 2007
- SharePoint Conference SEA Organizing Committee

# SESSION OBJECTIVES

- Overview of the New List Platform capabilities
- Demonstrate how to leverage on these new capabilities



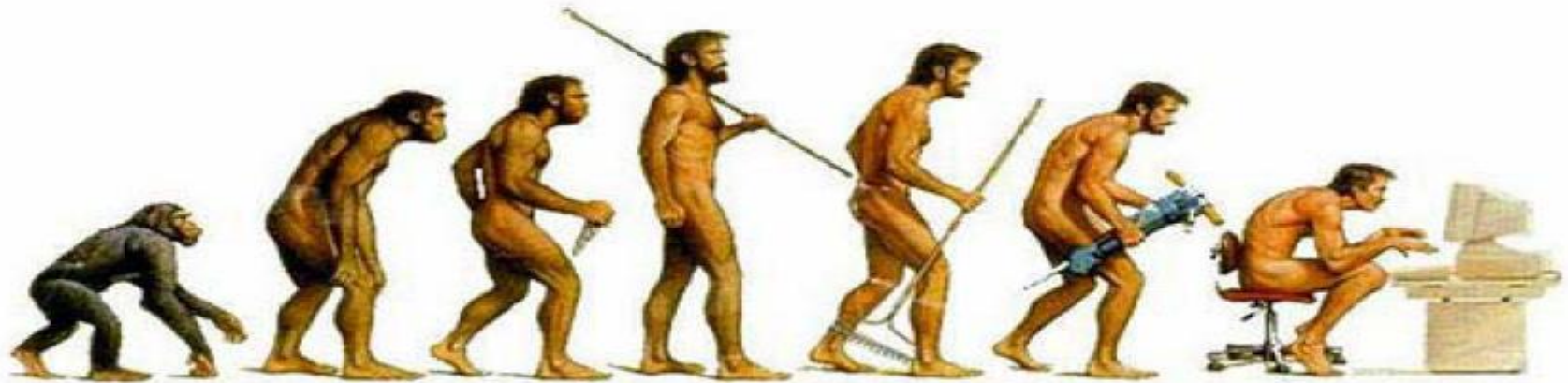
**SOUTHEAST ASIA**  
**SHAREPOINT CONFERENCE**

SINGAPORE 26 + 27 OCTOBER 2010

# WHAT IS SHAREPOINT LIST?

- Building blocks of SharePoint solution
- Collection of similar items using Content Type
- Contains columns and fields

*Ages and stages ... adapt*



**SOUTHEAST ASIA**  
**SHAREPOINT CONFERENCE**  
SINGAPORE 26 + 27 OCTOBER 2010

# LIST DATA IMPROVEMENTS IN SHAREPOINT 2010



**SOUTHEAST ASIA  
SHAREPOINT CONFERENCE**  
SINGAPORE 26 + 27 OCTOBER 2010

# KEY IMPROVEMENTS IN 2010

- Ratings, Taxonomy Tagging, Navigation
- Lookup & Relationships
- Validations
- InfoPath Form for List
- Large List Support
- External List

# RATINGS

- Custom, not available in 2007 OOTB
- Social Ratings Synchronization Job

**Rating setting**

Specify whether

When you enable

added to the con

added to the def

not already cont

either manually,

ratings, the ratin

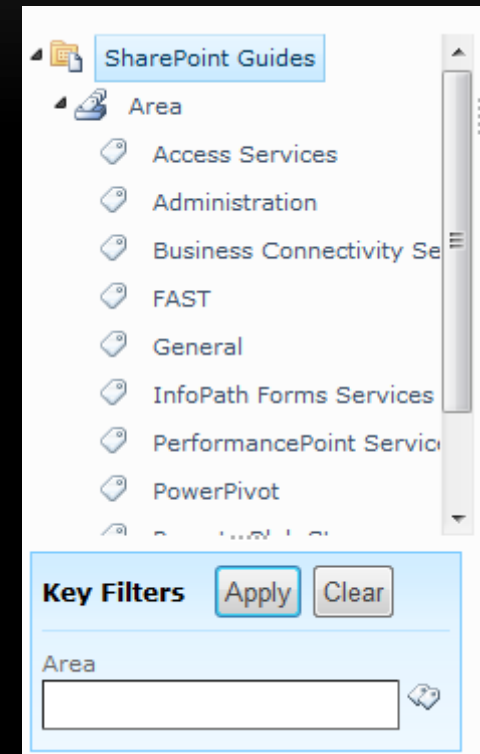
content types fo

<input type="checkbox"/>	Type	Name	Modified	<input type="checkbox"/>	Modified By	Rating (0-5)
<input type="checkbox"/>	Area	Access Services (1)				
<input type="checkbox"/>	Document	BI Eval Guide	9/12/2010 7:00 PM		SharePoint Admin	☆☆☆☆☆
<input type="checkbox"/>	Area	FAST (1)				
<input type="checkbox"/>	Document	FAST Search Server 2010 Eval Guide	9/12/2010 7:02 PM		SharePoint Admin	☆☆☆☆☆
<input type="checkbox"/>	Area	General (4)				
<input type="checkbox"/>	Document	SharePoint 2010 Overview and What's New	5/24/2010 4:27 PM		SharePoint Admin	☆☆☆☆☆
<input type="checkbox"/>	Document	Managed_metadata_overview	7/2/2010 12:01 AM		SharePoint Admin	☆☆☆☆☆
<input type="checkbox"/>	Document	Managed_metadata_overview_CMS4XO	7/1/2010 11:56 PM		SharePoint Admin	☆☆☆☆☆
<input type="checkbox"/>	Document	Collaboration Governance Plan	9/12/2010 6:52 PM		SharePoint Admin	☆☆☆☆☆

+ Add document

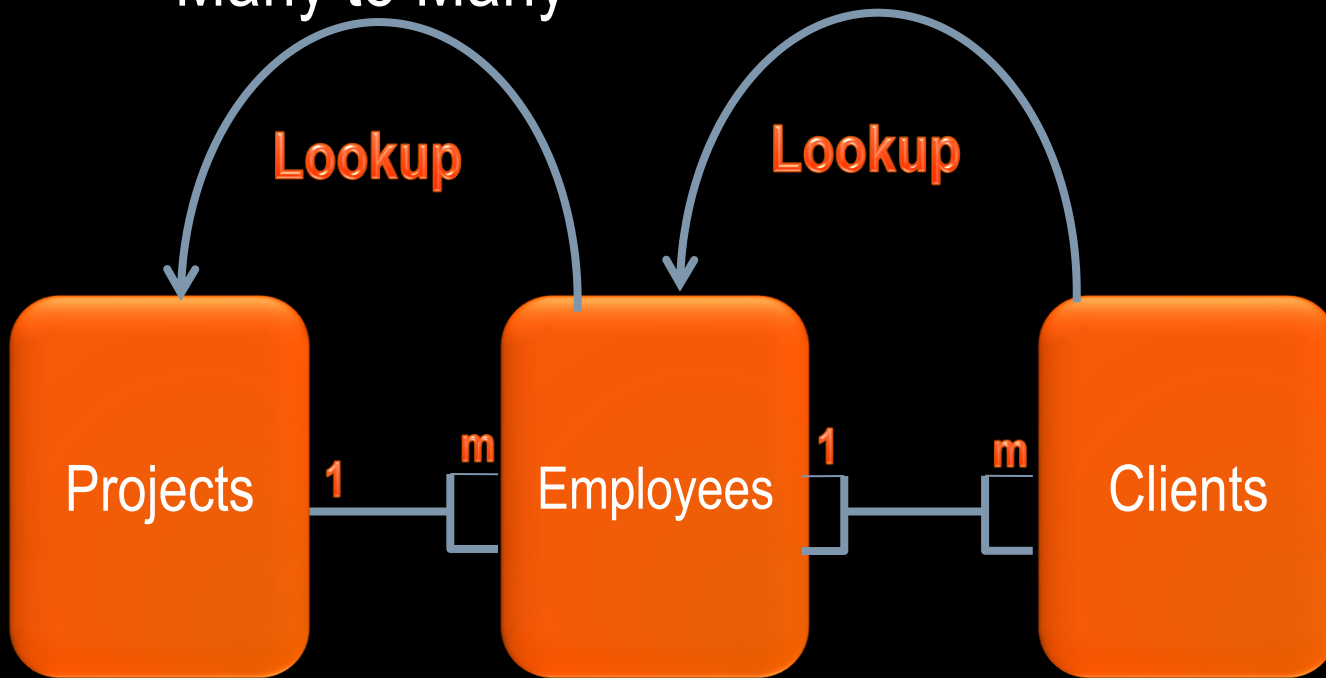
# METADATA NAVIGATION

- Improvement in findability through navigation
  - Navigation Hierarchies
  - Expandable and collapsible hierarchy
- Filter or refine results based on taxonomy bounded to columns
- Used as “Refiner” in search



# LISTS & LOOKUP

- One to Many
- Many to Many



Get information from:  
Projects

In this column:  
Title

Allow multiple values

Add a column to show each of these additional fields:

- Title
- Description
- Due Date
- ID
- Modified
- Created
- Version
- Title (linked to item)

# LISTS RELATIONSHIPS

- Enforce Data Integrity
- One-to-Many relationships can be used to:
  - Trigger **Cascade** delete
  - **Restrict** delete

**Relationship**

A lookup column establishes a relationship between list items in this list and related items in the target list. Specify the relationship behavior enforced by this lookup column when a list item in the target list is deleted.

When an item in the target list is deleted, *cascade delete* will delete all related items in this list. *Restrict delete* will prevent the deletion of an item in the target list if it has one or more related items in this list.

Enforce relationship behavior

Restrict delete

Cascade delete

- **Cascade / Restrict delete not supported on multi-value lookups!**



# LIST VALIDATIONS

Validation Formula can be specified on List and Columns

- = [Column1] – [Column2]
- = AND([Column1] > [Column2], [Column1] < [Column3])
- = DATEDIF([Column1],[Column2], “d”)
- = CONCATENATE([Column1], “, ”, [Column2])

# Relationships & Joins Validations

DEMO



**SOUTHEAST ASIA  
SHAREPOINT CONFERENCE**

SINGAPORE 26 + 27 OCTOBER 2010

# LARGE LIST SUPPORT



**SOUTHEAST ASIA  
SHAREPOINT CONFERENCE**

SINGAPORE 26 + 27 OCTOBER 2010

# LARGE LISTS

Set a limit for how many rows of data can be retrieved for query before execution

- List View Threshold
- List View Threshold for Administrators and Auditors
- List View Lookup Threshold



# LIST VIEW THRESHOLD



Resource Throttling

OK Cancel

**List View Threshold**  
Specify the maximum number of items that a database operation can involve at one time. Operations that exceed this limit are prohibited.

List View Threshold:

**Object Model Override**  
If you choose to allow object model override, users to whom you grant sufficient permission can override the List View Threshold programmatically for particular queries.

Allow object model override:  
 Yes  No

**List View Threshold for Auditors and Administrators**  
Specify the maximum number of items that an object model database query can involve at one time for users to whom you grant sufficient permissions through Security Policy.

List View Threshold for auditors and administrators:

**List View Lookup Threshold**  
Specify the maximum number of Lookup, Person/Group, or workflow status fields that...

List View Lookup Threshold:



## SOUTHEAST ASIA SHAREPOINT CONFERENCE

SINGAPORE 26 + 27 OCTOBER 2010

# LARGE LIST SUPPORT

## Know the limits:

- 50 million items per list or library limit
- 2GB file or item attachment limit
- List View Threshold: 5000 items
- Unique Permissions: 50,000 per list or library
- List View Lookup Threshold: 8 maximum no. of join operations
- List View Threshold Size: 20,000 items can be retrieved at one time when performed by administrator or auditor





# LARGE LIST BEST PRACTICE

- Limit folders to 5000
- Make sure first columns is indexed in Views
  - Only first index is used when defining filter
  - Specify item limits
- Use metadata driven navigation on lists or libraries
- Use Access Services for data instead of list functionality

# INFOPATH FORMS WITH LIST



**SOUTHEAST ASIA**  
**SHAREPOINT CONFERENCE**  
SINGAPORE 26 + 27 OCTOBER 2010

# LIST FORMS

- `DispForm.aspx`
- `EditForm.aspx`
- `NewForm.aspx`



# LIST FORMS WITH INFOPATH

- Displayinf.aspx
- Editifs.aspx
- Newifs.aspx

# EXTERNAL LIST



**SOUTHEAST ASIA  
SHAREPOINT CONFERENCE**

SINGAPORE 26 + 27 OCTOBER 2010

# BUSINESS CONNECTIVITY SERVICES (BCS)

Office Clients



Office Client Integration Runtime



SharePoint

External List

Web Parts

Search

External Data Column

BCS Service

Secure Store

Enterprise Content Type

Deployment

SQL Server

Web Services

LOB

Custom

Tools



SharePoint Designer



Visual Studio

**SOUTHEAST ASIA**  
**SHAREPOINT CONFERENCE**

SINGAPORE 26 + 27 OCTOBER 2010

# EXTERNAL LIST

- Presentation Layer of External Content Type (ECT)
- Similar UI and navigation as normal list
- CRUD capability
- Offline capability with SharePoint Workspace 2010

# NO CODE INTEGRATION



Use this page to view and manage settings for this external content type.


## External Content Type Information

Key information about this external content type.

Name	Products
Display Name	Products
Namespace	http://sp2010/bpm
Version	1.0.0.0
Identifiers	ProductID(int32)
Office Item Type	Generic List
Offline Sync for external list	Enabled
External System	AdventureWorksLT2008R2

## External Content Type Operations

Use this part to manage the operations of this external content type.

 This external content type has read, write, and search capabilities. You may associate it with other external content types by creating an Association operation from the Operations Design View.

Name	Type	Data Source Object
Create	Create	Product
Read Item	Read Item	Product
Update	Update	Product
Delete	Delete	Product
Read List	Read List	Product

## Permissions

Permissions for this external content type.

Name	demo\spadmin
STS[SecurityTokenService]	http://sharepoint.microsoft.com/claims/2009/08/isaauthenticated true http://www.w3.org/2001/XMLSchema

## External Lists

View and navigate to external lists bound to this external content type.

Name	URL
------	-----

## Fields

A list of the fields that were defined in the operations of this external content type.

Field Name	Type
Name	System.String
ProductNumber	System.String
Color	System.String
StandardCost	System.Decimal
ListPrice	System.Decimal
Size	System.String
Weight	System.Nullable<System.Decimal>
ProductCategoryID	System.Nullable<System.Int32>
ProductModelID	System.Nullable<System.Int32>
SellStartDate	System.DateTime
SellEndDate	System.Nullable<System.DateTime>
DiscontinuedDate	System.Nullable<System.DateTime>
rowguid	System.Guid
ModifiedDate	System.DateTime
ProductID	System.Int32



# SOUTHEAST ASIA SHAREPOINT CONFERENCE

SINGAPORE 26 + 27 OCTOBER 2010

# External List

DEMO



**SOUTHEAST ASIA  
SHAREPOINT CONFERENCE**

SINGAPORE 26 + 27 OCTOBER 2010

# SUMMING UP

- SharePoint 2010 List Data Model
  - Relationships, Joins and Data Integrity
  - List Throttling for Large List Support
- Simple and integrated developer experience for list based applications
  - CAML is still available, but LINQ is here
  - Client OM and Server OM
  - REST APIs

A large, bright orange starburst shape with multiple points, centered on a dark gray background. Inside the starburst, the text "ALWAYS, ALWAYS USE CONTENT TYPES!!!!" is written in white, bold, uppercase letters.

**ALWAYS, ALWAYS  
USE CONTENT  
TYPES!!!!**

A black silhouette of a city skyline with various building shapes, located on the left side of the bottom banner.

**SOUTHEAST ASIA  
SHAREPOINT CONFERENCE**  
SINGAPORE 26 + 27 OCTOBER 2010

# THANK YOU FOR YOUR ATTENTION

For more information please contact

Name : Steve Sofian

Title : Solutions Architect

Email : [steve.sofian@bertelsmann.de](mailto:steve.sofian@bertelsmann.de)



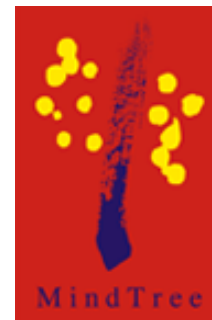
**SOUTHEAST ASIA**  
**SHAREPOINT CONFERENCE**

SINGAPORE 26 + 27 OCTOBER 2010

# Microsoft®

Thank you to our Sponsors

## Gold Sponsors



## Silver Sponsors

## Bronze Sponsors



# SOUTHEAST ASIA SHAREPOINT CONFERENCE

SINGAPORE 26 + 27 OCTOBER 2010